



\* All images are for illustrative purposes only.

**UHD Signage** 65/55/49/43" UH5F-H

# LG UHD Signage

 UniKomp.pl

Nowe Technologie IT

ul. Dworcowa 8  
43-200 Pszczyna  
sklep@unikomp.pl  
www.wyswietlanie.pl

Telefony  
(32) 210 22 11  
(32) 326 33 00  
(32) 212 88 22



Clear View  
with Non-glare Coating



Superb Picture Quality



Sleek and Practical Design



Product Reliability



webOS Smart Platform



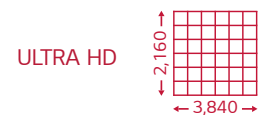
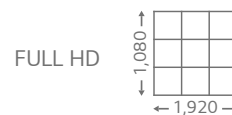
Meeting Room Solution

## SUPERB PICTURE QUALITY



### Clear View with Non-glare Coating

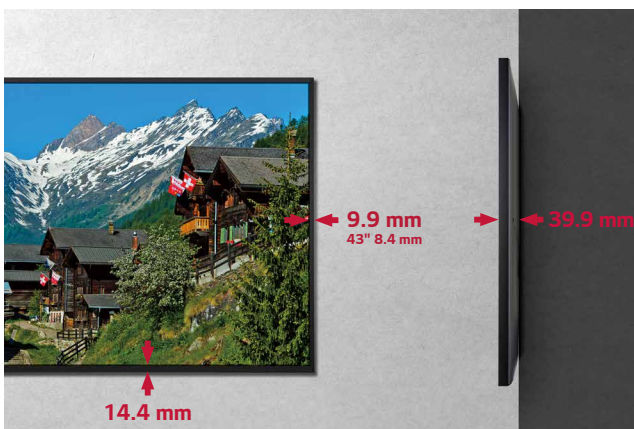
Viewers can be annoyed by unnecessary reflections when watching a screen under brightly lit conditions. The UH5F-H series has resolved such inconveniences by increasing the level of haze, which enhances visibility and text readability.



### ULTRA HD Resolution

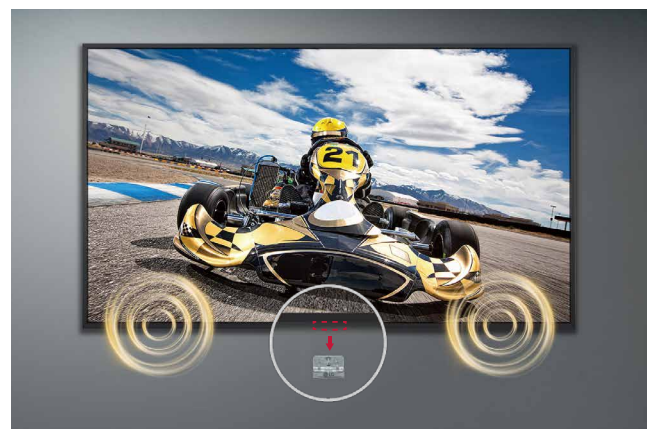
With the resolution that is 4 times higher than FHD, it makes the color and details of the contents more vivid and realistic. In addition, the wide viewing angle applied with an IPS panel, provides clear contents with no distortion.

## SLEEK AND PRACTICAL DESIGN



### Narrow Bezel & Slim Depth

This series has a smaller bezel size and thickness, which saves space and enables easy installation. In addition, it increases the immersive experience from the screen and provides a sophisticated design, improving the décor of the space where the product is installed.



### Detachable Logo and Built-in Speaker

This series is equipped with a new transparent logo which is well organized with surroundings. Also, its removable feature gives users flexibility for installation. Contents will be enriched with sound effects from built-in speakers, without the need for purchasing or installing external speakers.

## PRODUCT RELIABILITY



### IP5x Certified Design

The IP5x Dust-Proof Certification ensures that the product is completely protected from dust, eliminating the risk of performance degradation.

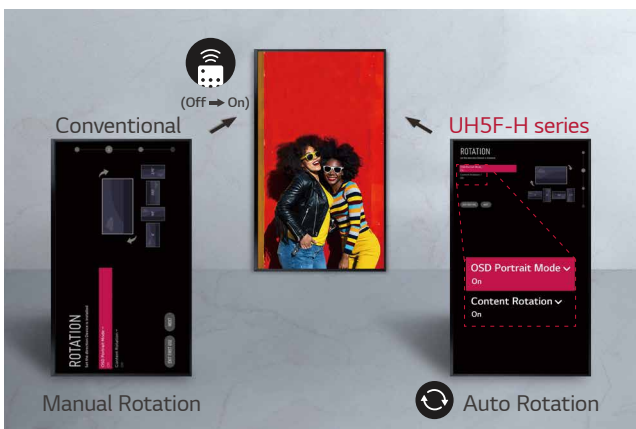


### 30° Tilting Installation

When a display is installed at high places, it is usually tilted for the user's comfort viewing. In consideration of this, the installation with 30 degrees of tilt\* is supported.

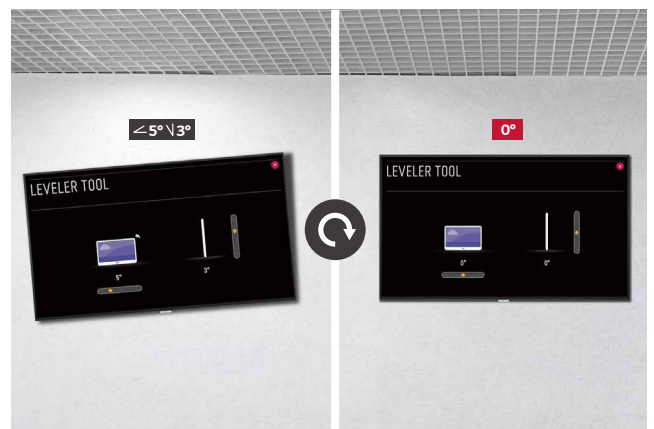
\* Tilt installation of up to 30 degrees facedown is supported. (In conditions within 30°C temperature, 50% humidity)

## EASY INSTALLATION



### Auto Screen Rotation

This series automatically detects its orientation (landscape or portrait mode) in the initial installation step, so manual rotation set-up process isn't required. The direction of OSD and background contents will be already set when you turn on a display at first.

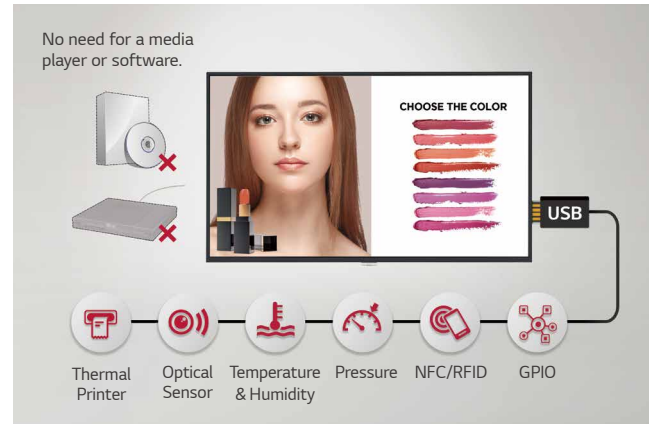


### Fine Adjustment

This series is equipped with a "horizontal sensor" which shows users how the device is tilt, so that it can be precisely installed.



## webOS SMART SIGNAGE PLATFORM



### High-Performance with webOS

Built-in Quad Core SoC can execute several tasks at once while providing smooth content playback without the need for a media player. Also, LG webOS platform enhances user convenience with intuitive GUI and simple app development tools.

### Various Sensor Applications

LG webOS smart signage platform easily supports connections with external sensors such as GPIO, NFC/RFID, temperature sensors, etc. via USB plug-in. The overall cost for maintenance is reduced as there's no need to purchase additional software or media players for creating value-added solutions.

## MEETING ROOM SOLUTION COMPATIBILITY



### Compatible with AV Control System

The UH5F-H series has been certified Crestron Connected® for high compatibility with professional AV controls to achieve seamless integration and automated control\*, boosting business management efficiency.

### Compatible with Video Conference System

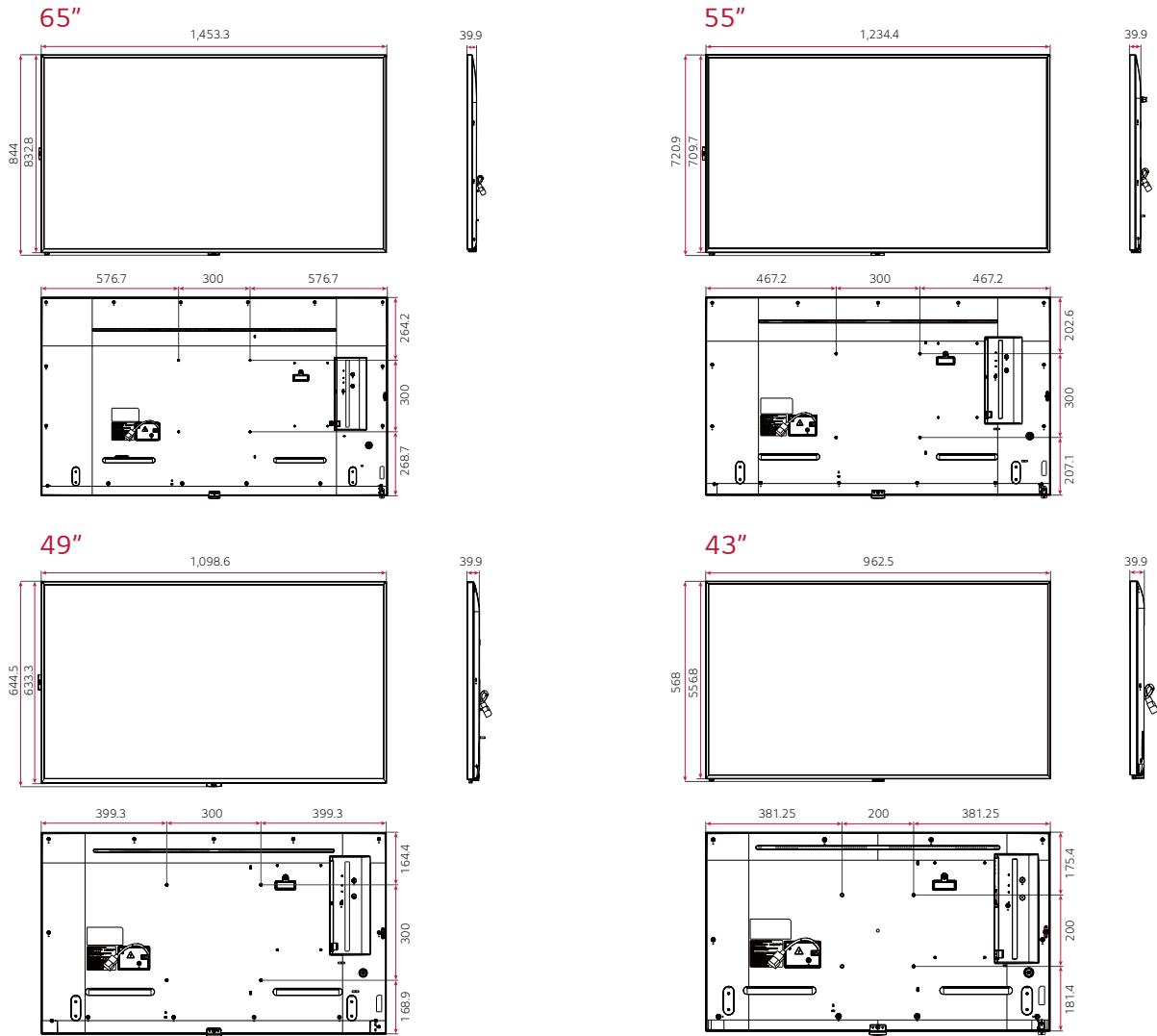
For the optimum visual meeting, the UH5F-H series has certified its compatibility with Cisco System that offers powerful and integrated control\* for a smarter video conference, eliminating a waste of time for setting up the picture quality or changing input on incoming calls.

\* Network based control

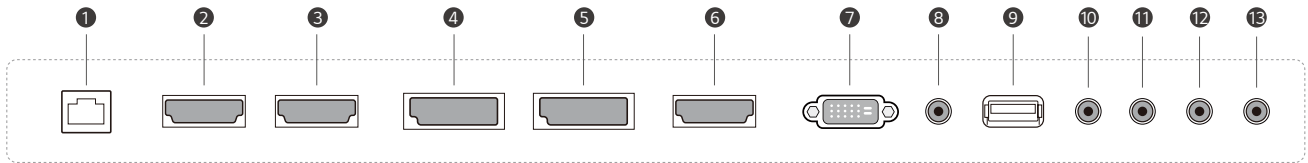
\* Using an HDMI cable connection

# DIMENSION

(unit: mm)



# CONNECTIVITY



- ① LAN
- ② HDMI IN1
- ③ HDMI IN2
- ④ DP IN
- ⑤ DP OUT
- ⑥ HDMI IN3
- ⑦ DVI-D IN
- ⑧ IR & LIGHT SENSOR
- ⑨ USB IN
- ⑩ AUDIO IN
- ⑪ AUDIO OUT
- ⑫ RS-232C IN
- ⑬ RS-232C OUT

\* Dimensions & Jack Panels may differ from the above image, so please contact LG sales team to verify before ordering.



Download  
 LG C-Display+  
 Mobile App  
 Google Play Store

- 🌐 [www.lg.com/global/business/information-display](http://www.lg.com/global/business/information-display)
- 📺 [www.youtube.com/c/LGCommercialDisplay](http://www.youtube.com/c/LGCommercialDisplay)
- 📘 [www.facebook.com/LGInformationDisplay](http://www.facebook.com/LGInformationDisplay)
- 🌐 [www.linkedin.com/company/lginformationdisplay](http://www.linkedin.com/company/lginformationdisplay)
- 🐦 [twitter.com/LG\\_ID\\_HQ](https://twitter.com/LG_ID_HQ)

LG may make changes to specifications and product descriptions without notice. Copyright © 2020 LG Electronics Inc. All rights reserved. "LG Life's Good" is a registered trademark of LG Corp. The names of products and brands mentioned here may be the trademarks of their respective owners.

