

# NEC

“MultiSync® E705 SST”

“MultiSync® E805 SST”

“MultiSync® P403 SST”

“MultiSync® P463 SST”

“MultiSync® P553 SST”

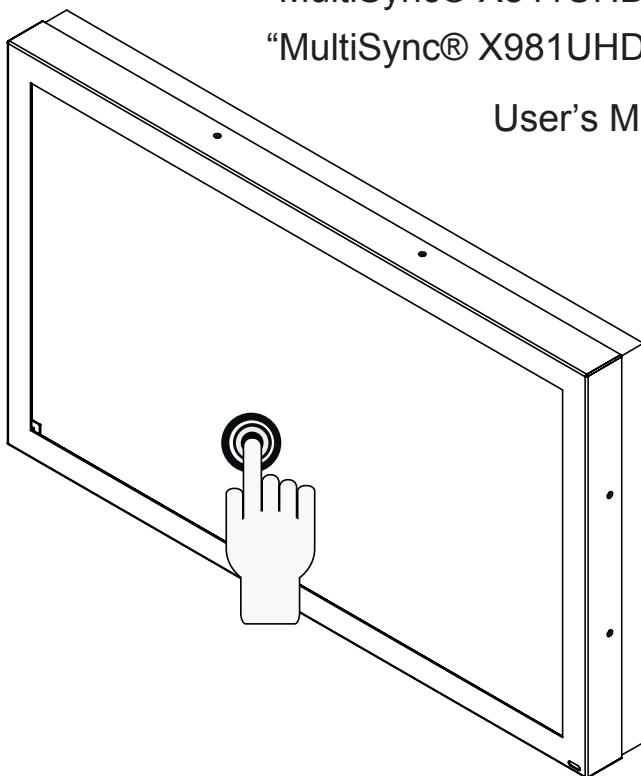
“MultiSync® P705 SST”

“MultiSync® P801 SST”

“MultiSync® X841UHD SST”

“MultiSync® X981UHD SST”

User's Manual



## For using Touch Panel

1. Turn off the monitor.
2. Install the equipment.\*1

### - Using slot 2 type PC:

Connect the slot 2 type PC into the option board slot. Connect the B type connector to the USB upstream port on the left back side of the monitor and the A type connector to the downstream port on the slot 2 type PC.

**NOTE:** Please refer to the slot 2 type PC's manual for connection.

**NOTE:** When you set option board accessory other then slot 2 type PC, touch function may not work.

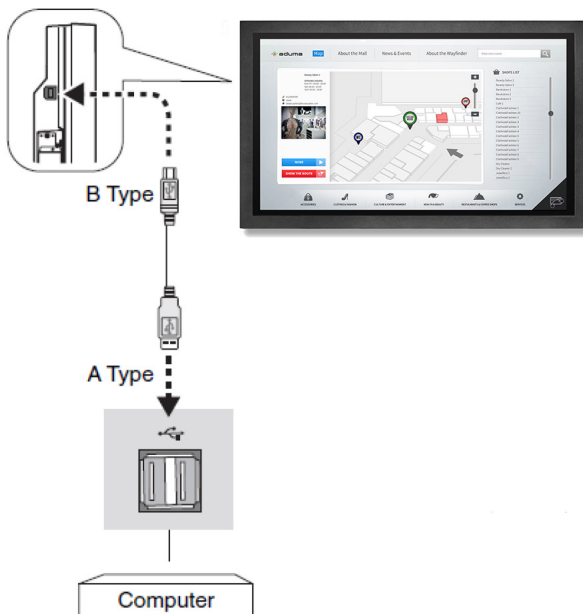
### - Using external computer:

Connect the B type connector to the USB upstream port on the left back side of the monitor and the A type connector to the downstream port on the external computer (Figure 1).

3. Turn on the monitor.

\*1: Please contact your NEC customer support for more detailed information.

Figure 1



**NOTE:** Intelligent Wireless Data (NFC) communication is not supported with NEC ShadowSense touch screens.

## Operating System Support Summary

OS	Single Touch	Native Multi-Touch Support	Custom Multi-Touch Support	Comments
Win XP, Win XP Embedded	Yes, mouse emulation	NO	Yes, through Baanto SW Development Kit (SDK)	
Win 7 (all)	Yes	Yes	Yes, through Baanto SW Development Kit (SDK)	
Win8 (all)	Yes	Yes	Yes, through Baanto SW Development Kit (SDK)	
Mac OSX	Yes, with special EEPROM setting, R6.00 firmware	NO	Yes, through Baanto SW Development Kit (SDK)	Mouse data needs to be adjusted in MAC Os's to work propely. R6.00 Firmware allows user to configure MAC compatibility mode via Dashboard
Linux	Yes	Yes	Yes, through Baanto SW Development Kit (SDK)	All Linux variants (Fedora, Ubuntu, etc.) require a base Linux kernel of 3.4 for native support. Otherwise, support is not guaranteed but might still be possible with analysis
Android	Yes	Yes	Yes, through Baanto SW Development Kit (SDK)	Requires base kernel to be 3.4 or above for support

## Monitor Setting

Select the input signal.

- Using slot 2 type PC. Select [OPTION]- Using external computer:  
Select the input signal which is supplied by the PC connected to USB connector.

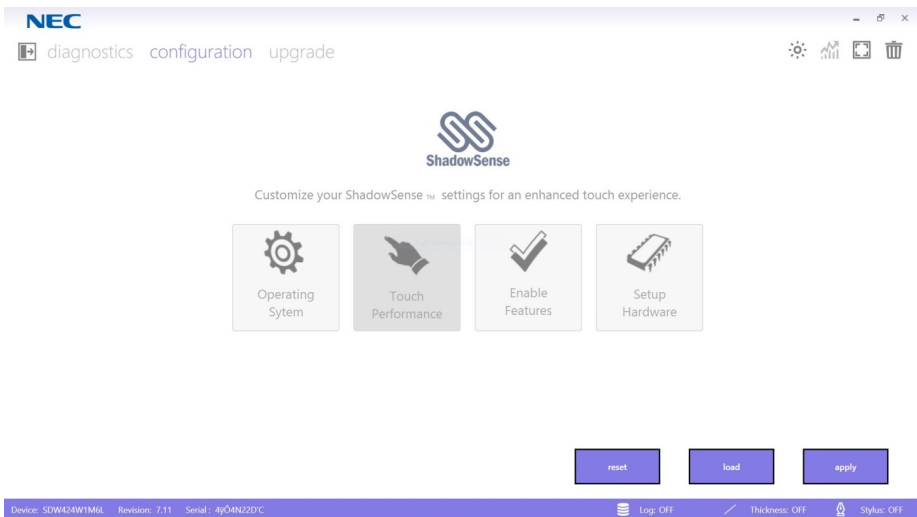
**NOTE:** Touch function does not work in PIP mode.

**NOTE:** Calibration under Windows is an option which can only make the touch screen work more accurate but it is not required.

## NEC Dashboard Configuration Tool

ShadowSense algorithms offer a variety of parameters that can be used to customize the touch screen's performance. The Dashboard software tool provides customers with the ability to easily modify the behavior of the touchscreen based on various use cases. It allows the user to adjust the performance and touch characteristics of the touchscreen such as to provide spurious touch and palm rejection, debris and static object recognition, rain and fluid cancellation and to enable/disable various features, like automatic pen & eraser detection.

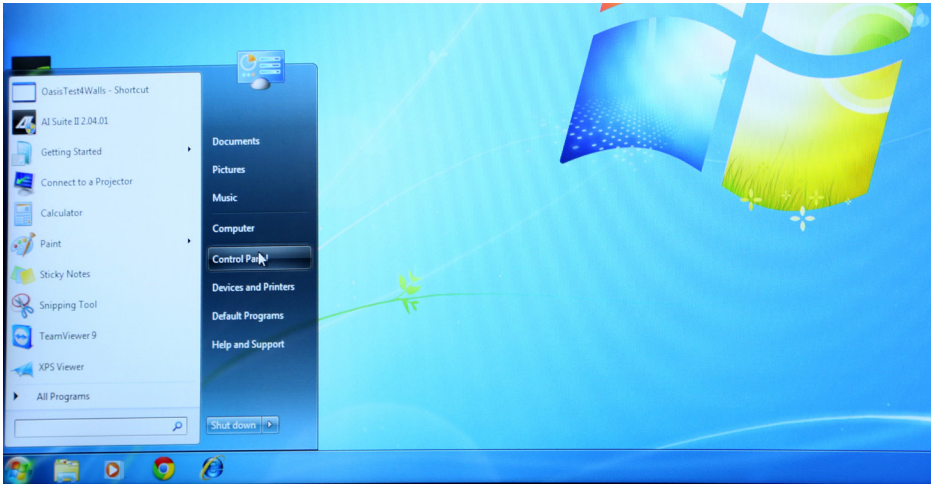
**NOTE:** The NEC Dashboard configuration tool is available for download on [www.nec-display-solutions.com](http://www.nec-display-solutions.com).



## Re-Calibrated

If the cursor fails to follow exact finger position, the screen can be re-calibrated in the following way:

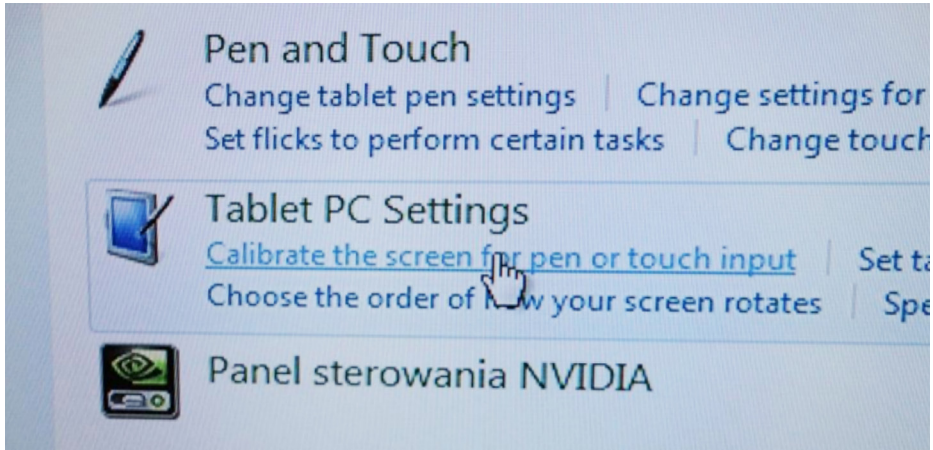
1. Open start menu in Windows and select Control Panel.



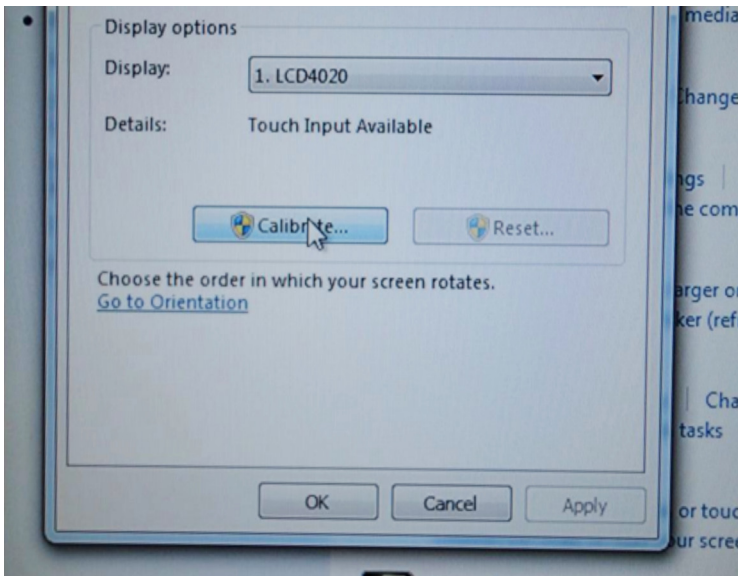
2. Open Hardware and Sound settings.



3. Open Tablet PC Settings.



4. Press Calibrate button.

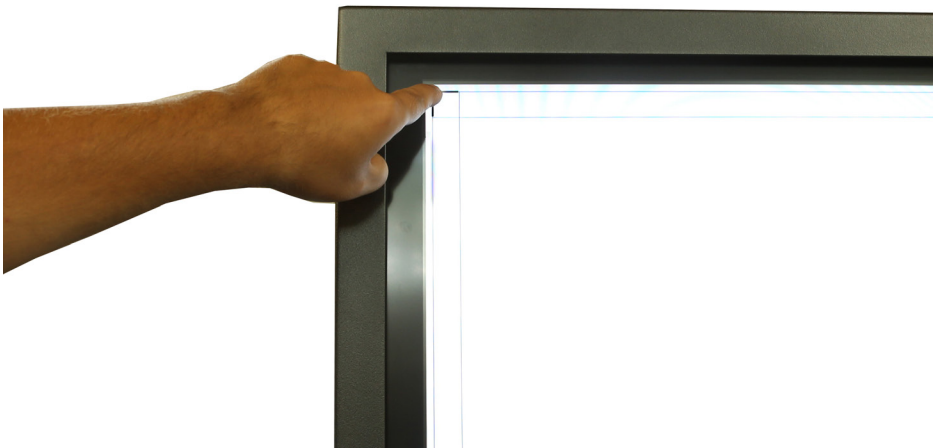


5. If User Account Control window pops up, click yes.



6. When the calibration process begins, touch the middle of each cross that appears in bold on the screen; crosses shall appear several times in each corner of the screen. After touching the last cross, the calibration process ends.

**NOTE:** If the touch is still not precise enough, the whole action can be repeated.



## Disposal Instruction

NEC products are meeting all EU norms regarding safety, health and environmental requirements.



**WEEE Mark (European Directive 2002/96/EC)**

**Within the European Union**



### **WEEE Mark (European Directive 2002/96/EC)**

#### **Within the European Union**

EU-wide legislation, as implemented in each Member State, requires that waste electrical and electronic products carrying the mark (left) must be disposed of separately from normal household waste.

This includes monitors and electrical accessories, such as signal cables or power cords. When you need to dispose of your NEC display products, please follow the guidance of your local authority, or ask the shop where you purchased the product, or if applicable, follow any agreements made between yourself and NEC.

The mark on electrical and electronic products only applies to the current European Union Member States.

#### **Outside the European Union**

If you wish to dispose of used electrical and electronic products outside the European Union, please contact your local authority so as to comply with the correct disposal method.





**NEC Display Solutions Europe GmbH**

Landshuter Allee 12-14

D – 80637 München

Phone: +49 (0)89 99 699-0

Fax: +49 (0) 89 99 699-500

[infomail@nec-displays.com](mailto:infomail@nec-displays.com)

[www.nec-display-solutions.com](http://www.nec-display-solutions.com)