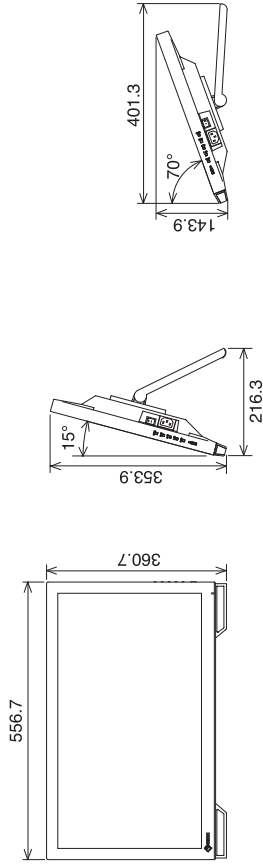
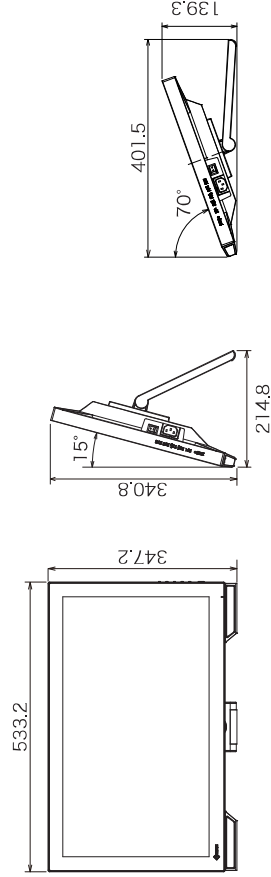


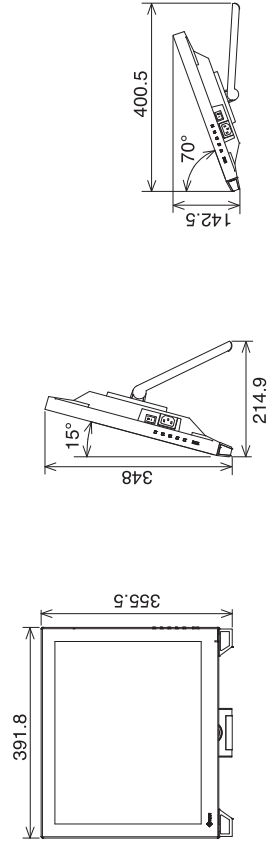
FDF2382WT



FDF2182WT



FDS1782T



Touch Panel Monitors
DuraVision®
 FDF2382WT / FDF2182WT / FDS1782T



Seamless Touch Experience with a Highly Durable Screen for Industrial, Medical, and Other Markets

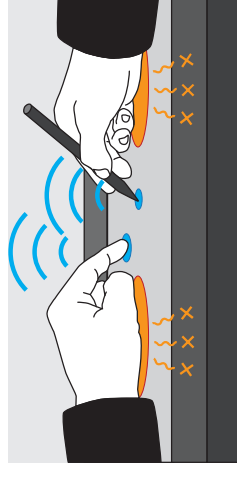
Projected Capacitive Touch Panel

The DuraVision FDF2382WT, FDF2182WT and FDS1782T feature projected capacitive (PCAP) touch technology which is more durable and reliable compared to other touch technologies. Both monitors accept touch input from a bare finger or dedicated stylus.



Multitouch Operation

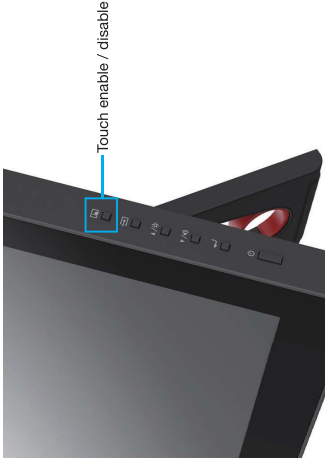
The screen can detect up to 10 simultaneous touches so you can easily operate a variety of applications in almost any environment. Furthermore, compared to 5-point multitouch the screen has a higher touch sensitivity, making writing with a finger or stylus smoother. The monitors are equipped with palm rejection which allows you to rest your hand directly on the screen without causing any unintended touch input.



Palm rejection minimum activation area is 2 x 2 cm for FDF2382WT / FDS1782T and 4 x 4 cm for FDF2182WT.

Touch Detection Control

Users can easily turn touch detection on or off by pushing the button conveniently located on the monitor's side.



Sensitivity Calibration

The monitors are equipped with technology which calibrates the touch sensitivity to minimize incorrect touch response due to environmental factors and electromagnetic noise. This ensures that the screen maintains accurate touch interaction during use.

Fully Flat Design

The fully flat surface provides a seamless touch experience to the edges of the screen. This makes swiping motions and scrolling a breeze. The smooth surface also allows for easy cleaning.



Flicker-Free Viewing

Due to the way brightness is controlled on LED backlights, a small number of people perceive flicker which causes eye fatigue. The monitors relieve eye fatigue by regulating brightness to make flicker unperceivable.

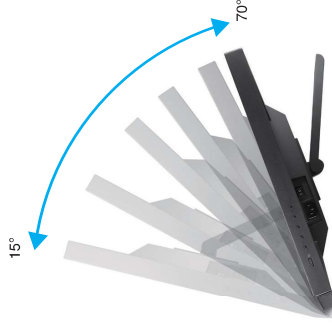


High Durability

The touch screens have a non-scratch surface made of reinforced glass, making them durable enough to withstand long-term use in a range of environments.

Reclining Stand

The equipped stand provides flexible positioning to allow the monitor to rest on your desk like a laptop and recline back to your desired angle. This makes it easy to place the monitor in the ideal position for comfortable use in any environment.



Complete Connection

The monitors are equipped with a range of connectivity options which are conveniently located on the side for easy access.

FDF2382WT / FDS1782T



- Headphone Jack
- Audio Input
- D-Sub Mini 15 Pin Connector
- DVI-D 24 Pin Connector
- DisplayPort Connector
- USB Hub (Down x 2)
- USB Port (Up x 1)

FDF2182WT



- Audio Input
- D-Sub Mini 15 Pin Connector
- HDMI Connector
- DisplayPort Connector
- USB Hub (Down x 2)
- USB Port (Up x 1)

Specifications

| Model | FDF2382WT | FDF2182WT | FDS1782T |
|-----------------------------------|--|--|--|
| Product Image | | | |
| Model/Variations | With Stand, Without Stand | With Stand, Without Stand | With Stand, Without Stand |
| Cabinet Color | Gray, Black | Gray, Black | Gray, Black |
| Panel | IPS | IPS | IPS |
| Backlight | LED | LED | LED |
| Size | 23" / 59 cm | 21.5" / 54.2 cm | 17" / 43 cm |
| Native Resolution | 1920 x 1080 (16:9 aspect ratio) | 1920 x 1080 (16:9 aspect ratio) | 1280 x 1024 (5:4 aspect ratio) |
| Viewable Image Size (H x V) | 509.2 x 286.4 mm | 476.6 x 268.1 mm | 337.9 x 270.3 mm |
| Pixel Pitch | 0.265 x 0.265 mm | 0.248 x 0.248 mm | 0.284 x 0.284 mm |
| Display Colors | 16.77 million | 16.77 million | 16.77 million |
| Viewing Angle (H/V, typical) | 178° / 178° | 178° / 178° | 178° / 178° |
| Brightness (typical) | 280 cd/m ² | 280 cd/m ² | 300 cd/m ² |
| Contrast Ratio (typical) | 1000:1 | 5000:1 | 1000:1 |
| Response Time (typical) | 11 ms (gray-to-gray) | 26 ms (black-to-white/black) | 11 ms (gray-to-gray) |
| Type | Projected Capacitive | Projected Capacitive | Projected Capacitive |
| Communication Protocol | USB | USB | USB |
| Surface Hardness | 5 H | 7 H | 5 H |
| Compatible OS | Windows 10, 8.1 (64-bit, 32-bit) | Windows 10, 8.1 (64-bit, 32-bit) | Windows 10, 8.1 (64-bit, 32-bit) |
| Input Terminals | DisplayPort (HDCP1.3), DVI-D (HDCP1.4), D-Sub (mini) | DisplayPort (HDCP1.3), HDMI (HDCP1.4), D-Sub (mini) | DisplayPort (HDCP1.3), DVI-D (HDCP1.4), D-Sub (mini) |
| Digital Scanning Frequency | 31 Hz / 64 Hz, 69.4 Hz (G.S.T), 69.7 Hz (G.S.T), 71 Hz (V.1) | DisplayPort 51.68 Hz, 59.4 Hz (G.S.T), 59.6 Hz (G.S.T), 61 Hz (V.1) | 31~61 Hz, 59~61 Hz (G.S.T), 60~61 Hz (V.1) |
| Timing Scanning Frequency | 31~61 Hz, 55~76 Hz | 31~61 Hz, 55~76 Hz | 31~61 Hz, 55~76 Hz |
| Sync Formats | Separate | Separate | Separate |
| USB | USB 2.0, Type-B | USB 3.1, Gen 1, Type-B | USB 2.0, Type-B |
| Downstream | USB 2.0, Type-A x 2 | USB 3.1, Gen 1, Type-A x 2 | USB 2.0, Type-A x 2 |
| Speakers | 1.0 W + 1.0 W | 1.0 W + 1.0 W | 1.0 W + 1.0 W |
| Input Terminals | Stereo mini jack, DisplayPort | Stereo mini jack, DisplayPort, HDMI | Stereo mini jack, DisplayPort |
| Output Terminals | Stereo mini jack | Stereo mini jack | Stereo mini jack |
| Power Requirements | AC 100~240 V, 50/60 Hz | AC 100~240 V, 50/60 Hz | AC 100~240 V, 50/60 Hz |
| Maximum Power Consumption | 42 W | 42 W | 37 W |
| Typical Power Consumption | 14 W | 14 W | 10 W |
| Power Save / Standby Mode | Less than 0.7 W | Less than 0.7 W | Less than 0.7 W |
| Preset Modes | User1, User2, sRGB | User1, User2, sRGB | User1, User2, sRGB |
| Physical Specifications | 556.7 x 143.9 x 353.07 x 216.3 x 401.3 mm | 538.2 x 198.2 x 340.8 x 214.8 x 401.5 mm | 391.8 x 142.5 x 348 x 214.9 x 400.4 mm |
| Dimensions (Landscape, W x H x D) | 556.7 x 339.2 x 54 mm | 538.2 x 325 x 54 mm | 391.8 x 331 x 54 mm |
| Net Weight | 6.6 kg / 14.5 lbs | 5.6 kg / 12.3 lbs | 4.8 kg / 10.6 lbs |
| Net Weight (Without Stand) | 6 kg / 13.2 lbs | 5.1 kg / 11.2 lbs | 4.3 kg / 9.5 lbs |
| Tilt | 15° / 70° | 15° / 70° | 15° / 70° |
| Hole Spacing (VESA Standard) | 100 x 100 mm | 100 x 100 mm | 100 x 100 mm |
| Operating Temperature | 5~35°C | 5~35°C | 5~35°C |
| Operating Humidity | 20~80% | 20~90% | 20~80% |
| Certifications & Standards | CB, CE, TÜV, FCC, CAN, FCC A/B, VCCI, BSMI, CCC, RoM, EAC, RoHS, WEEE, China RoHS | CB, CE, TÜV, FCC, CAN, FCC A/B, TÜV, PSE, VCCI, BSMI, CCC, RoM, EAC, RoHS, WEEE, China RoHS | CB, CE, TÜV, FCC, CAN, FCC A/B, TÜV, PSE, VCCI, BSMI, CCC, RoM, EAC, RoHS, WEEE, China RoHS |
| Supplied Accessories | AC power cord (2 m), USB Type-A - USB Type-B cable (1.8 m), Audicable (2 m), Cleaning cloth, CD-ROM (PDF user's manual, Touchpanel driver, TP01/02), Mask sheet x 2 (PDF/182WT-F), Setup guide | AC power cord (2 m), USB Type-A - USB Type-B cable (1.8 m), Audicable (2 m), Cleaning cloth, CD-ROM (PDF user's manual, Touchpanel driver, TP01/02), Mask sheet x 2 (PDF/182WT-F), Setup guide | AC power cord (2 m), USB Type-A - USB Type-B cable (1.8 m), Audicable (2 m), Cleaning cloth, CD-ROM (PDF user's manual, Touchpanel driver, TP01/02), Mask sheet x 2 (PDF/182WT-F), Setup guide |
| Warranty | 3 years | 3 years, 24-hour use | 3 years |