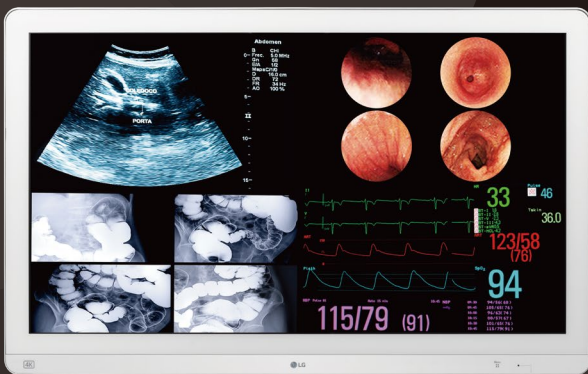




31.5-inch 4K Surgical Monitor

| 32HL714S |

- ▶ 31.5-inch 4K (3840x2160) IPS Display
- ▶ HDR 10, HDR Effect
- ▶ sRGB 115% (Area)
- ▶ Mirror Mode, Rotation Mode
- ▶ Up to 4PBP, PIP
- ▶ Protection Glass (1.6t, Anti-reflection, Anti-fingerprint)
- ▶ 12G-SDI, Quad 3G-SDI Support



Specification

LG Surgical Monitors

Resolution		4K (3840x2160)		Full HD (1920x1080)
Inch (Aspect Ratio)		31.5-inch (16:9)	27-inch (16:9)	27-inch (16:9)
Model		32HL714S, 32HL710S	27HJ713S, 27HJ710S	27HK510S
Model				
Panel	Panel Type	IPS	IPS	IPS
	Color Gamut (Typ.)	sRGB 115% (Area), sRGB over 99% (Coverage)	sRGB 115% (Area), sRGB over 99% (Coverage)	sRGB 115% (Area), sRGB over 99% (Coverage)
	Viewing Angles (CR≥10)	178° (Right/Left), 178° (Up/Down)	178° (Right/Left), 178° (Up/Down)	178° (Right/Left), 178° (Up/Down)
	Brightness (Typ.)	800 cd/m ²	800 cd/m ²	1000 cd/m ²
	Surface Treatment	Protection Glass (1.6t, Anti-reflection, Anti-fingerprint)	Protection Glass (1.3t, Anti-reflection, Anti-fingerprint)	Protection Glass (1.6t, Anti-reflection, Anti-fingerprint)
	Contrast Ratio (Typ.)	1300:1	1000:1	1000:1
	Response Time (GTG*)	14ms (Off- setting), 5ms (Faster- setting)	14ms (Off- setting), 5ms (Faster- setting)	14ms (Off- setting), 5ms (Faster- setting)
Feature	DICOM Compliant	Yes	Yes	Yes
	HW Calibration	Yes (True Color Pro)	Yes (True Color Pro)	Yes (True Color Pro)
	HDR	HDR 10, HDR Effect	No	No
Video Signals	Input Terminals	32HL714S : HDMI x1, DisplayPort x1, DVI x1, 12G-SDI x1, 3G-SDI x4, SFP x1 32HL710S : HDMI x1, DisplayPort x1, DVI x1, 3G-SDI x1	HDMI x1, DisplayPort x1, DVI x1, 3G-SDI x1	HDMI x1, S-Video x1, Composite x1, 3G-SDI x1, DVI-I x1, D-Sub x1 (DSUB to DVI-I Gender Cable), Component x1 (DSUB to DVI-I Gender Cable)
	Output Terminals	32HL714S : DisplayPort x1, DVI x1, 12G-SDI x1 32HL710S : DisplayPort x1, DVI x1, 3G-SDI x1	DisplayPort x1, DVI x1, 3G-SDI x1	3G-SDI x1, DVI-D x1
Connectivity	USB	1 upstream, 1 downstream	1 upstream, 1 downstream	1 upstream, 1 downstream
Power	AC Input	100-240Vac, 50/60Hz	100-240Vac, 50/60Hz	100-240Vac, 50/60Hz
	Power Consumption (Max.)	32HL714S : 180W 32HL710S : 120W	120W	120W
	Power Consumption (DC Off)	Less than 0,3W	Less than 0,3W	Less than 0,3W
Resistance Rating		IP35 (Front), IP32 (Except for Front), IK06	IP35 (Front), IP32 (Except for Front), IK06	IP35 (Front), IP32 (Except for Front), IK06
Certifications & Standards		IEC(IEC 60601-1 / IEC 60601-1-2), EN(EN 60601-1 / EN 60601-1-2), IEC(IEC 60950-1 / IEC 55032, 55024), EN (EN 60950-1 / EN 55032, 55024) cUL (ANSI/AAMI ES 60601-1, CSA CAN/CSA-C22.2NO. 60601-1) FCC (FCC part 15 Class A), FDA (Registration (Class I)), RoHS, REACH, WEEE	IEC(IEC 60601-1 / IEC 60601-1-2), EN(EN 60601-1 / EN 60601-1-2), IEC(IEC 60950-1 / IEC 55032, 55024), EN (EN 60950-1 / EN 55032, 55024) cUL (ANSI/AAMI ES 60601-1, CSA CAN/CSA-C22.2NO. 60601-1) FCC (FCC part 15 Class A), RoHS, REACH, WEEE 27HJ710S : FDA (Registration (Class II)) 27HJ713S : FDA (Registration (Class II))	IEC(IEC 60601-1 / IEC 60601-1-2), EN(EN 60601-1 / EN 60601-1-2), IEC(IEC 60950-1 / IEC 55032, 55024), EN (EN 60950-1 / EN 55032, 55024) cUL (ANSI/AAMI ES 60601-1, CSA CAN/CSA-C22.2NO. 60601-1) FCC (FCC part 15 Class A), FDA (Registration (Class I)), RoHS, REACH, WEEE
User Convenience	PBP / PIP	Yes (2/3/4PBP) / Yes	Yes (2PBP) / Yes	Yes (2PBP) / Yes
	Screen Filp	Mirror Mode & Rotation Mode	No	No
	Failover Input Switch	Yes	Yes	Yes
Physical Specifications	Weight	32HL714S : 13.5 kg (29.8 lb) 32HL710S : 12.4 kg (27.3 lb)	7.7 kg (17 lb)	7.7 kg (17 lb)

*GTG : Gray to gray response time

UniKomp.pl
Nowe Technologie IT

ul. Dworcowa 8 Telefony
43-200 Pszczyna (32) 210 22 11
sklep@unikomp.pl (32) 326 33 00
www.wyswietlanie.pl (32) 212 88 22