



World-class data capture for  
Enterprise and Healthcare

# MioWORK™ A500 Series

## OPTIMUM FUSION OF COMFORT AND RUGGEDNESS

This MioWORK™ A500 Series is the perfect solution for a wide range of commercial applications. Similar size to a smartphone, the 5" capacitive multi-touch panel provides comfort to the user without sacrificing the ruggedness, endurance and durability. It has various use applications including Logistics & Transportation, Utility Field Services, Hospitality and Retail POS, Warehouse Inventory Management and Pharmacy Management.

The device's rugged design is suitable for indoor and outdoor application with a sunlight readable display, glove support, 1.2 metre (up to 1.8m) drop-proof and IP67 water and dust resistance. Features of Android™ 9.0 and supporting LTE and voice\* complete the smartphone criteria. The high-capacity battery and hot-swappable features allows for maximum efficiency within shift hours. The best-in-class Zebra SE4750 (SR/MR) 1D/2D barcode imagers with intelligent PRZM imaging technology allow for a flexible scanning range of up to 6m depending on device configuration. In addition, integrated front and rear cameras and the NFC HF RFID sensor area on the top of the device complement the excellent data capture capability in the workplace.

An extended accessory eco-system including BCR pistol grip, single/multi-unit charging cradles and protective caps ensures the A500 Series is right at home in any working environment.



### World-class data capture

- High performance SE4750SR 1D/2D BCR and integrated NFC / HF RFID
- Optional SE4750MR 1D/2D Laser BCR for flexibility in scanning range
- SE4750 LED or Laser 1D/2D scan engine for scanning range flexibility



### Excellent connectivity

- Integrated 4G LTE for round-the-clock connectivity\*
- WiFi, Bluetooth® 4.1 BLE, Integrated GPS/GLONASS\*



### Unlimited user scenarios

- Hot-swap battery for 24/7 operability in the field or during consecutive shifts
- Broad range of professional accessories including unique BCR pistol grip design



### Rugged versatility

- IP67 antimicrobial housing for improved infection control
- Optional protective caps increasing drop resistant from 1.2m to 1.8m (MIL-STD-810G)



\* Available on A545/A546



# MioWORK™ A500 Series

| Specs              | A505 WIFI   | A506 WIFI                        | A545 LTE                          | A546 LTE                         |
|--------------------|---|----------------------------------|-----------------------------------|----------------------------------|
| Display            | 5" (1280 x 720) HD wide view angle IPS panel, 450 nits  |                                  |                                   |                                  |
| Touch              | Capacitive multi-touch, Optical bonding, glove support and waterproof<br>Chemically Strengthened Dragontrail™ Glass |                                  |                                   |                                  |
| Platform           | Qualcomm® Quad core 1.3GHz  |                                  |                                   |                                  |
| OS                 | Android™ 9.0  |                                  |                                   |                                  |
| Memory/Storage     | 2GB RAM / 16GB ROM  |                                  |                                   |                                  |
| Expansion          | Micro-SD up to 128GB  |                                  |                                   |                                  |
| Wireless Interface | WIFI 802.11 a/b/g/n (2.4/5GHz) with WPA and WPA2 security   |                                  |                                   |                                  |
|                    | N/A   |                                  | 4G LTE (CAT 1) and VoLTE          |                                  |
|                    | N/A   |                                  | GPS, AGPS, GLONASS, Beidou        |                                  |
|                    | Bluetooth® 4.1 + BLE  |                                  |                                   |                                  |
| NFC                | RFID: ISO14443 and ISO15693   |                                  |                                   |                                  |
|                    | NFC: MiFare, Felica, Calypso and HF RFID tag  |                                  |                                   |                                  |
| BCR                | Sensor area on front side top of device   |                                  |                                   |                                  |
|                    | Integrated Zebra® 1D/2D imager with PRZM intelligent imaging technology   |                                  |                                   |                                  |
|                    | SE4750SR LED<br>Range up to 110cm   | SE4750MR Laser<br>Range up to 6m | SE4750SR LED<br>Range up to 110cm | SE4750MR Laser<br>Range up to 6m |
| Camera             | Rear: 8M AF w/ Flash LED, Front: 2M   |                                  |                                   |                                  |
| Battery            | 4050mAh Li-ion Polymer  |                                  |                                   |                                  |
|                    | Battery life 10+ hours (Hot-swap user replaceable)  |                                  |                                   |                                  |
| Sensors            | Accelerometer (G sensor), Ambient Light sensor, Proximity sensor, Vibration motor                                   |                                  |                                   |                                  |
| Physical Interface | MicroSD slot  |                                  |                                   |                                  |
|                    | 3.5mm Jack: Supports headphone + mic / Supports dongle payment module   |                                  |                                   |                                  |
|                    | Pogo pin connector (9 pin), support charging and USB (Host / Client) Function                                       |                                  |                                   |                                  |
|                    | Built-in mic x2, support noise cancellation   |                                  |                                   |                                  |
|                    | Built-in speaker x1   |                                  |                                   |                                  |
|                    | N/A   |                                  | Receiver for voice call           |                                  |
| N/A                |   | Micro SIM slot x1                |                                   |                                  |
| Environment        | Antimicrobial   |                                  |                                   |                                  |
|                    | IP67 and 1.2m drop resistant following MIL-STD-810G (up to 1.8m with protective caps)                               |                                  |                                   |                                  |
|                    | Temperature: -20°C to +60°C (operating); -30°C to +70°C (storage)   |                                  |                                   |                                  |
|                    | Humidity: 0 to 95%, Non-Condense  |                                  |                                   |                                  |
| Certification      | CE / CB / FCC / IC / BQB / ROHS / WEEE  |                                  | CE / CB / BQB / ROHS / WEEE       |                                  |
| Warranty           | 12 months (extended warranty available)   |                                  |                                   |                                  |
| Dimension          | 161 * 80 * 17.5 (L x W x H; mm)   |                                  |                                   |                                  |
| Weight             | 265g  |                                  | 275g                              |                                  |

## Box contents

- MioWORK A500 Series device
- AC charger with UK/EU plug
- USB to pogo pin charging cable
- Quick Start Guide
- Warranty Statement





# MioWORK™ A500 Series



## ACCESSORIES GUIDE

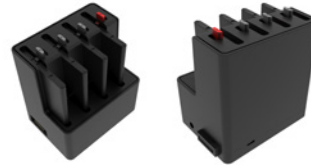


**Sold separately**  
PN: 5413N5360005

### ▶ SINGLE / MULTI-UNIT CRADLE

7-pin connector, MicroUSB (charging), DC-in, USB 2.0 (host)  
Combine up to 8 single-unit cradles and charge simultaneously.

- **Single-unit cradle charging requirements:** 10W power adaptor included with single-unit cradle.
- **Multi-unit cradle charging requirements:** 120W power adaptor.



**Sold separately**  
PN: 5413N5360014

### ▶ 4 SLOT BATTERY CHARGER

7-pin connector, MicroUSB port (charging), DC-in and LED indicator.  
No power leads included.

- **Charging one battery only:** 10W adapter + USB cable available separately (5413N5360003).
- **Charging multiple batteries:** Requires 120W adapter. Available separately (5413N5360004).



**Sold separately**  
PN: 5413N5360004

### ▶ 120W CRADLE ADAPTER

**Required for:**

- Charging multiple single-unit cradles simultaneously.
- Charging multiple batteries simultaneously in 4-slot battery charger.



**included with device**  
PN: 5416N5360016

### ▶ POWER ADAPTOR AND USB TO POGO CHARGING CABLE

5V/2A USB Type A Power adaptor with UK/EU plug,  
including separate 1.3m USB to pogo pin 'snap-on' cable.



**Sold separately**  
PN: 5413N5360014 (4-slot)  
PN: 5413N5360005 (single)

### ▶ SINGLE-UNIT CRADLE + 4-SLOT BATTERY CHARGER

- Combine two 4-slot battery chargers or a single 4-slot battery charger with up to 4 device cradles. Charge simultaneously.
- Requires 120W cradle adapter.



# MioWORK™ A500 Series



## ACCESSORIES GUIDE



**Sold separately**  
PN: 5416N5360022

### ▶ PROTECTIVE CASING

Increases drop resistance from 1.2m to 1.8m. Made out of Antimicrobial material and compatible with Single unit cradle.



**Sold separately**  
PN: 5416N5360017

### ▶ HANDSTRAP

Detachable and adjustable with direct access to hot-swap battery.



**Sold separately**  
PN: 5416N5360026

### Specification

|                            |   |
|----------------------------|---|
| Buttons                    | 1x BCR key; 1x programmable key (default: Enter function)   |
| I/O                        | 4x pogo pin (BCR, programmable key, GND x2)   |
| Environment                | IP-rating N/A on pistol grip casing (main unit retains IP67 spec)<br>1.2m drop resistant (1.8m with protective caps)<br>Temperature: -20°C to +60°C (operating); -30°C to +70°C (storage)<br>Humidity: 0 to 95%, Non-Condense |
| Certifications             | FCC/IC, CE/CB, RoHS, WEEE   |
| Weight                     | 85.3g (approx. 409g ~ 419g including main unit)   |
| Dimensions (H x L x W; mm) | Stand-alone: 117.5*107.4*78<br>Including main unit: 117.5*161*80  |

### ▶ BCR PISTOL GRIP

BCR trigger key and unique 'enter' key feature for increased productivity. Replaces the rear battery cover.

