



27" Ultra Slim Monitor

FlexScan® EV2780



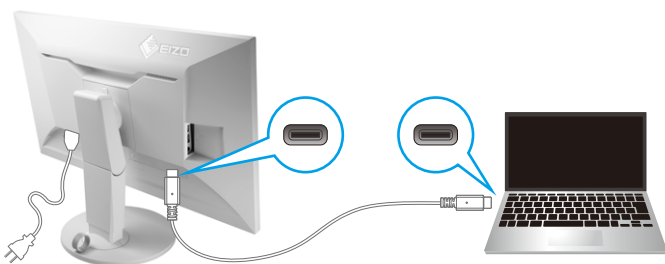
Increase Connectivity in Style with USB Type-C

USB Type-C with Power Delivery

The FlexScan EV2780 comes with a USB Type-C port. With a single USB Type-C cable you can transmit both video and audio signals, transfer data, and also charge a laptop or smart-phone at the same time. What's more, the EV2780 has an internal power unit so no external AC adapter is required.

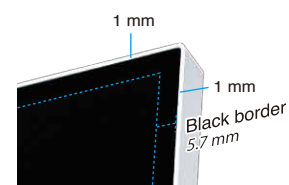
Ultra-Thin Bezels on All Four Sides

The monitor features 1 mm ultra-slim bezels on the sides and top with black borders of 5.7 mm. Electrostatic switches are placed on the front of the monitor for easy adjustment of monitor settings. Furthermore the bezels are flush with the screen surface, making a completely flat screen perfect for multi-monitor configurations.



Check compatibility:
<http://www.eizoglobal.com/support/compatibility/device/usb-type-c/USB-Type-c-compatibility.pdf>

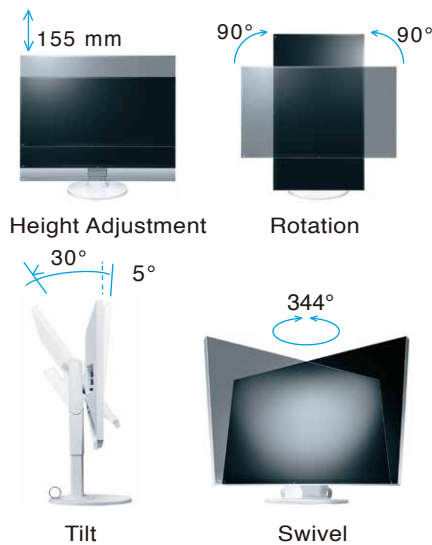
■ Top bezel



■ Bottom bezel: Old vs New



Best Positioning with Flexible Stand



Multiple Inputs, Audio, and USB 3.0



Flicker-Free Viewing

Due to the way brightness is controlled on LED backlights, some people perceive flicker on their screen which causes eye fatigue. The FlexScan EV series utilizes a hybrid solution to regulate brightness and make flicker unperceivable without any drawbacks like compromising color stability – even on low brightness settings.



Significantly Reduce Blue Light

In the visible light spectrum, blue light has wave lengths adjacent to ultraviolet light. Compared to the factory preset setting of 6500 K of typical LCD monitors, Paper Mode is closer to the spectral distribution with long reddish wavelengths so it reduces the amount of blue light, a cause of eye fatigue, and helps prevent eyestrain when reading documents.



Picture by Picture

The FlexScan EV2780 lets you view data from two input sources at once such as a Windows and a Mac computer with no distracting bezel in between.



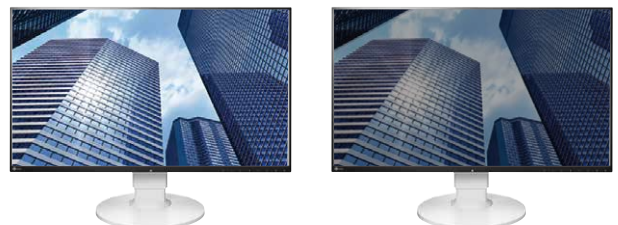
Auto Brightness Control

To prevent eye fatigue, a brightness sensor called Auto EcoView detects the changes in the ambient brightness that occurs throughout the day and automatically adjusts the screen to the ideal brightness level.



1% - 100% Brightness Range

In a dimly-lit work environment, a monitor with low brightness settings is more comfortable to use. With its LED backlight, the monitor is adjustable to 1 cd/m² which is less than 1% of the maximum.



White on White

The aesthetically-pleasing design of the monitor extends even to the cables. White cables come bundled with the white cabinet; and black cables with the black cabinet version of the FlexScan EV2780. Additionally the attached Cable Holder neatly holds the cables behind the stand.

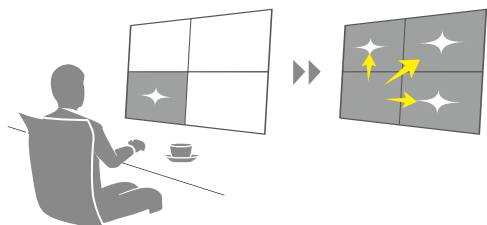


Clear View from All Angles

The monitor uses an LED-backlit IPS (in-plane switching) LCD panel with 178° viewing angle that minimizes color shift and contrast changes when viewing the screen at an angle. This means that two people sitting at the one computer can easily see the screen – and it also makes the EV2780 perfect for multi-monitor configurations.

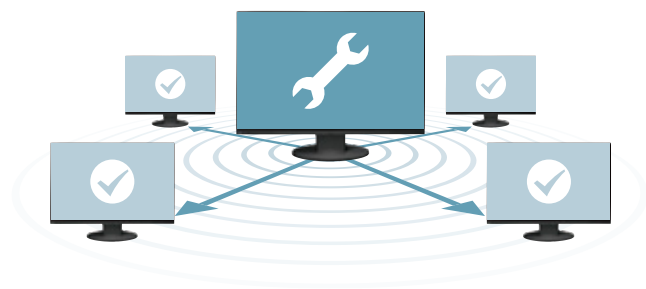
Screen InStyle

EIZO's Screen InStyle is a newly developed software that allows you to easily manage monitor settings such as power, color, brightness and gamma by using your mouse instead of monitor control buttons. But what makes Screen InStyle truly unique is that it allows you to manage multiple connected monitors from the one place – meaning that settings placed on one monitor will automatically be set to all connected monitors.



EIZO Monitor Configuration for Administrators

EIZO Monitor Configurator lets system administrators control the settings of all FlexScan EV monitors with a USB connection. The settings of one monitor can be saved as an xml file and applied to other monitors via USB or office network.



LED Backlights - Less Power, Longer Life

Compared to CCFL backlights, LED backlights last longer and consume less power. They are also mercury-free for minimal environmental impact.

5-Year Warranty

A manufacturer's 5-year warranty covers all components including the LCD panel to ensure a long service life. This warranty is 2-years or 67% longer than the standard 3-year warranty of most monitor brands for significantly lower running costs.



Compliance with International Labels



Zero Bright Pixels

EIZO guarantees this product will be free from bright sub-pixels for six months from purchase date.



SPECIFICATIONS

Model Variations	With FlexStand, Without Stand
Cabinet Colors	White, Black
Panel Type	IPS
Backlight	LED
Panel Size	27.0" / 68.5 cm
Native Resolution	2560 × 1440 (16:9 aspect ratio)
Viewable Image Size (H × V)	596.7 × 335.7 mm
Pixel Pitch	0.233 × 0.233 mm
Display Colors	16.77 million
Viewing Angles (H / V, typical)	178°, 178°
Brightness (typical)	350 cd/m ²
Contrast Ratio (typical)	1000:1
Response Time (typical)	5 ms (Gray-to-gray)
Panel Input Terminals	USB Type-C × 1 (with HDCP), DisplayPort × 1 (with HDCP), HDMI × 1 (with HDCP)
Digital Scanning Frequency (H / V)	USB Type-C: 31 - 89 kHz, 29 - 31 Hz and 59 - 61 Hz DisplayPort: 31 - 89 kHz, 59 - 61 Hz HDMI: 31 - 89 kHz, 29 - 31 Hz, 49 - 51 Hz and 59 - 61 Hz
USB Function	1 port for upstream (USB Type-C) 2-port USB hub
USB Standard	USB 3.1 Gen1
Speakers	1.0 W +1.0 W
Audio Output Terminals	3.5 mm headphone jack
Sound Adjustment	Volume
Power Requirements	AC 100 - 240 V, 50 / 60 Hz
Maximum Power Consumption	96 W
Typical Power Consumption	23 W
Power Save Mode	0.5 W or less
Power Management	Power Save (VESA DPM, DisplayPort Rev. 1.1a, and DVI DMPM)
Preset Modes	Color mode (Paper, Movie, sRGB, User1, User2)
Auto EcoView	Yes
OSD Languages	English, German, French, Italian, Japanese, Simplified Chinese, Spanish, Swedish, Traditional Chinese
Dimensions (Landscape, W × H × D)	611.6 × 390.2 - 545.2 × 245 mm
Dimensions (Without Stand, W × H × D)	611.6 × 359 × 48.5 mm
Net Weight	8.1 kg / 17.9 lbs
Net Weight (Without Stand)	5.3 kg / 11.7 lbs
Height Adjustment Range	155 mm
Tilt	35° Up, 5° Down
Swivel	344°
Pivot	90° (both clockwise and counter clockwise)
Hole Spacing (VESA Standard)	100 × 100 mm
Certifications & Standards (Please contact EIZO for the latest information.)	TCO Displays 7, EPEAT Gold (US), TUV/Ergonomics, TUV/GS, RCM, CE, CB, cTUVus, FCC-B, CAN ICES-3 (B), TUV/S, VCCI-B, EPA Energy Star, RoHS, WEEE, China RoHS, CCC, EAC
Supplied Accessories (May vary by country. Please contact EIZO for details.)	AC power cord, signal cable (USB Type-C - USB Type-C), CD-ROM (PDF user's manual), setup guide
Warranty	Five Years (Zero bright sub-pixels for six months from date of purchase.)



ul. Dworcowa 8
43-200 Pszczyna
sklep@unikomp.pl
www.wyswietlanie.pl

Telefony
(32) 210 22 11
(32) 326 33 00
(32) 212 88 22

All product names are trademarks or registered trademarks of their respective companies. FlexScan, and EIZO are registered trademarks of EIZO Corporation. Specifications are subject to change without notice.

Copyright © 2017 EIZO Corporation. All rights reserved.