

# **datacolor**

## Spyder X2



### QUICK START GUIDE

#### What You Get

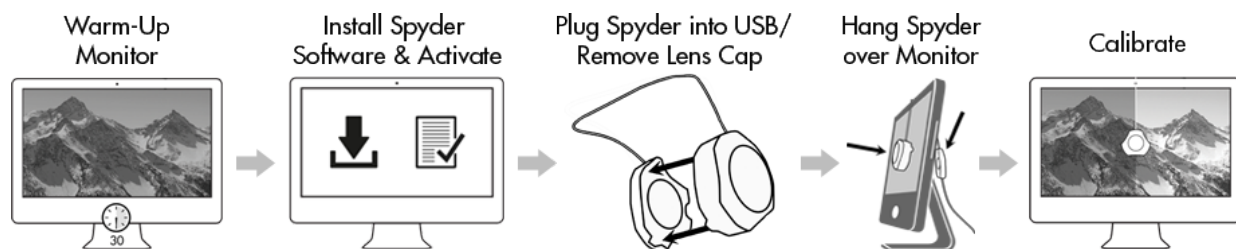
- Spyder X2 Sensor
- Serial Number
- Welcome Card with link to software and support resources
- USB-A Adapter

#### System Requirements

- Windows 10, 11 32/64
- Mac OS X 10.14, 10.15, 11 (Big Sur), 12 (Monterey), 13 (Ventura)
- Monitor Resolution 1280x768 or greater, 16-bit video card (24-bit recommended), 1GB of available RAM, 500MB of available hard disk space
- Internet connection for software download
- USB-C or USB-A port

#### Support

[support.datacolor.com](https://support.datacolor.com)



## Before You Begin

Your monitor should be turned on for at least 30 minutes before you begin the calibration process. Make sure that no direct light is falling on your display.

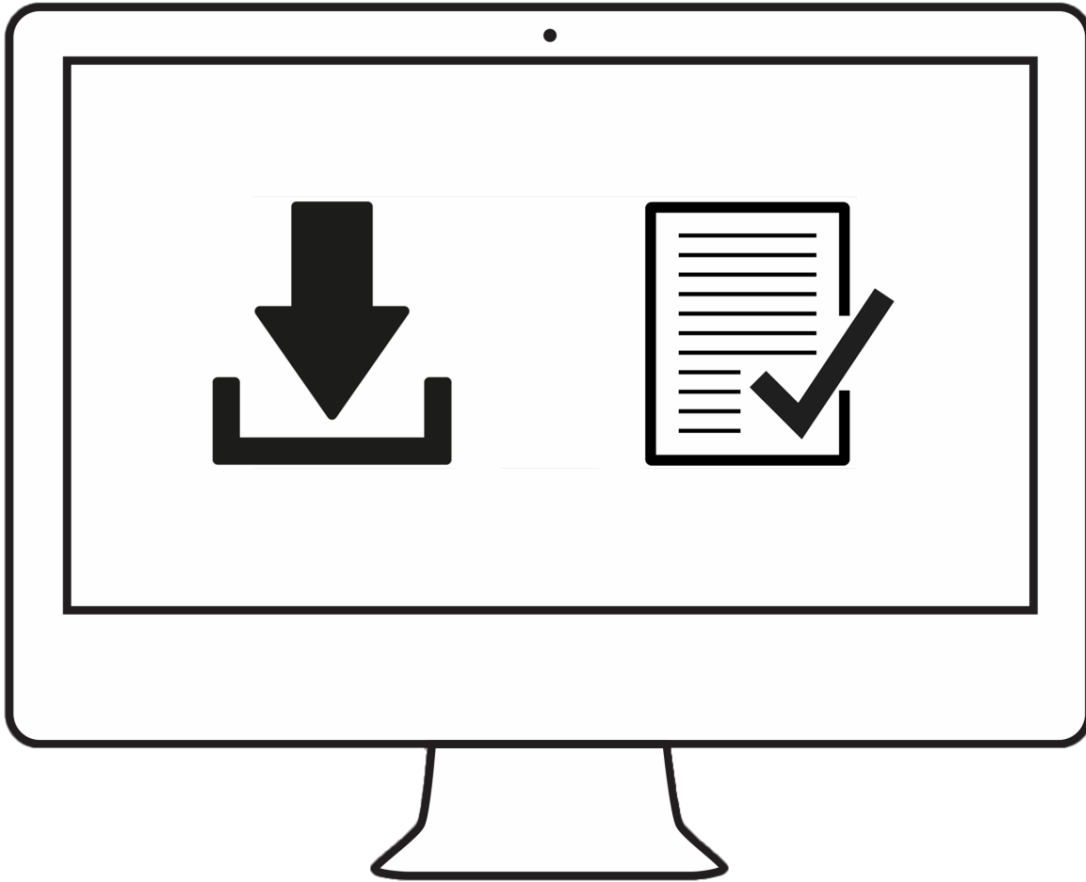


Reset the monitor controls to the factory default settings, if available. Please deactivate any Auto Brightness features on your monitor.

## Step 1 – Install and Activate

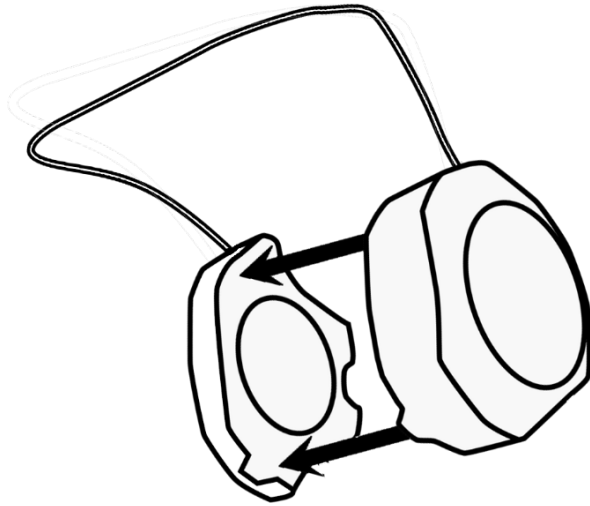
Install the Spyder X2 software from the [Datacolor Website](#). After the installation is complete, plug in your Spyder X2 and launch the software to begin the activation and registration process. This will automatically start your Warranty.

Use the Serial Number included in your Spyder X2 package to activate your software.

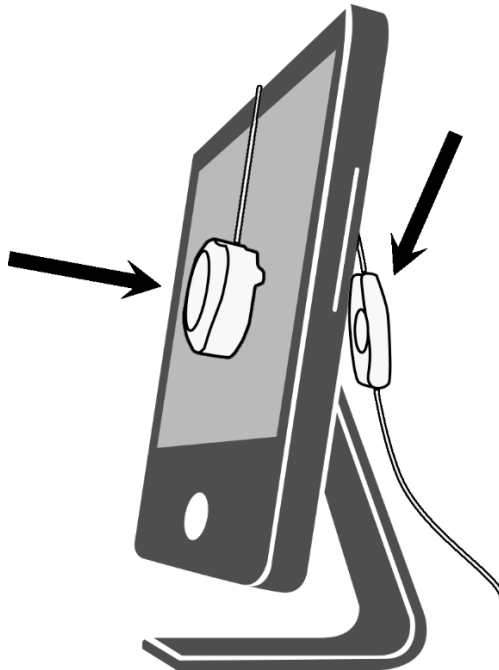


## Step 2 – Prepare for Calibration

Ensure your Spyder X2 is plugged into a powered USB port on your computer before you launch the Spyder X2 application. Follow the step-by-step on-screen instructions. Remove the lens cap from the Spyder X2 colorimeter.



Hang the Spyder X2 unit over your display when asked, using the lens cap, which slides on the USB cable, as a counterweight to keep it in place. If necessary, angle your display back to keep the Spyder X2 flat against your screen.



### Step 3 – Calibrate

The Spyder X2 software will walk you through the calibration process and create a custom display profile, which your operating system and color managed applications will use to correct your displayed colors. Click 'Help' in the bottom left corner of the screen to help with any feature of the software. You may also refer to the User Guide or Calibration video for assistance with calibration.

