

**PORTRAIT
INSTALLATION**

PWB3

UNIVERSAL PORTRAIT WALL MOUNT

FOR 40"-75" SCREENS

Designed for practical portrait installation of the screen. PWB3 is a robust flat wall mount that provides extraordinary functionality with its minimalist design. The ease of installation makes it very simple to use on all types of wall surfaces. Screen protection against falling, robust finish and, at the same time, modern design allow the use of PWB3 in conference rooms, waiting rooms or public areas.



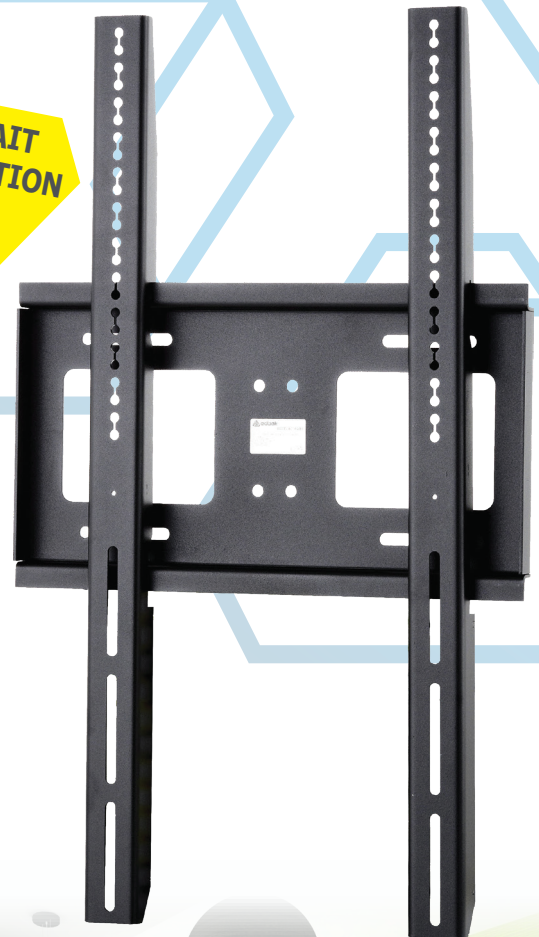
ul. Dworcowa 8, 43-200 Pszczyna
+48 (32) 210 22 11, +48 609 610 393
sklep@unikomp.pl | www.wyswietlanie.pl

FEATURES

- Portrait installation of the screen
- Screen protection against falling
- Screen mounting screws included
- Robust design to ensure load capacity up to 80 kg
- Minimalist design and functionality
- Modern design

PRODUCT SPECIFICATIONS

Short index	PWB3
Category	Tilt Wall Mounts
Product group	Flat Wall Mounts
Colour	Black
Warranty	Limited 5-years
Number of screens	1
Minimum screen size	40"
Maximum screen size	75"
Maximum load	80 kg
VESA Mounting Compatibility	100x100 up to 400x600



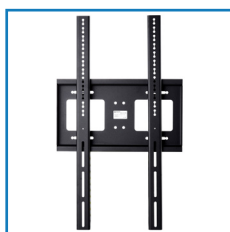
40"-75"



100x100
400x600



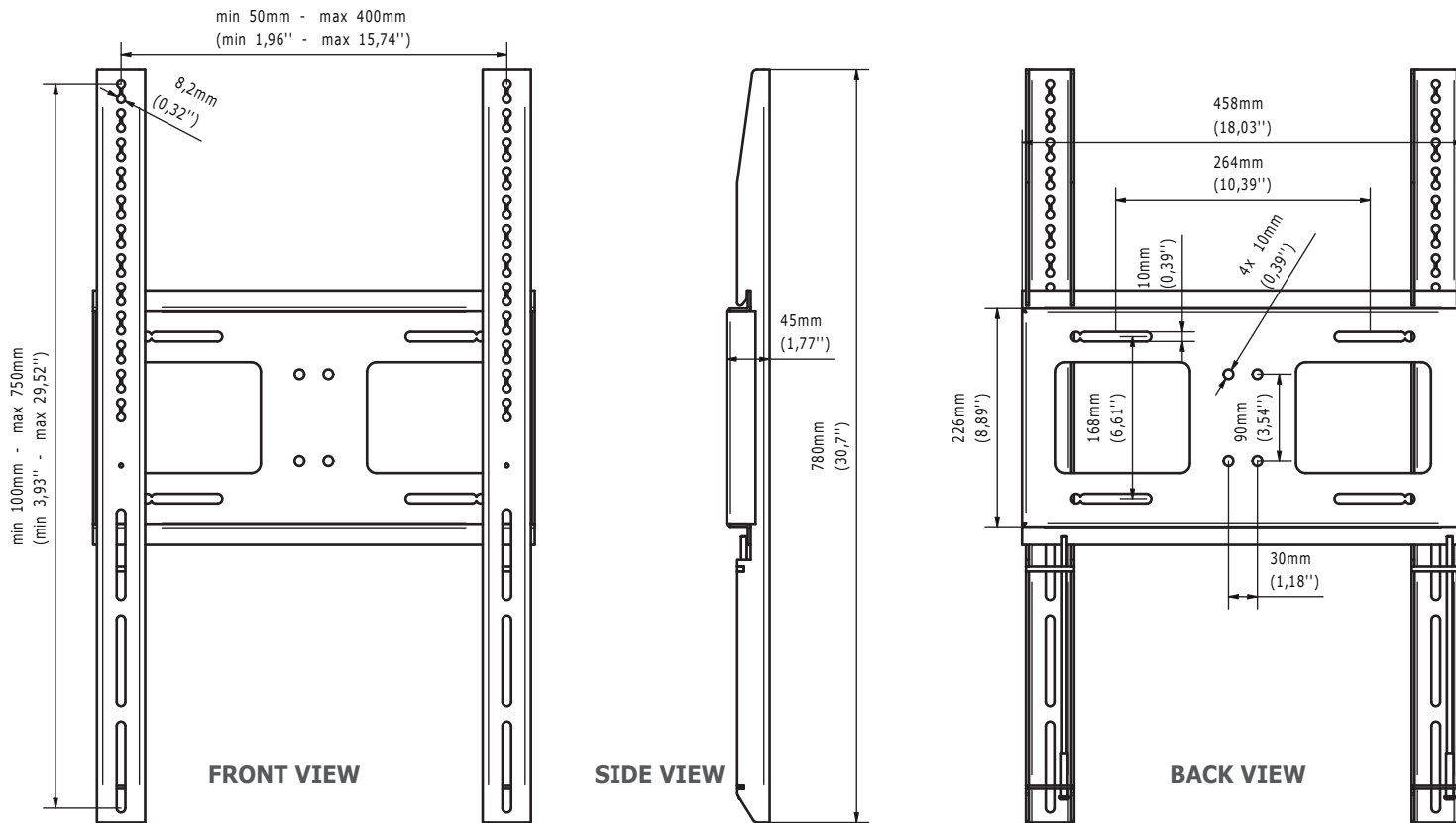
80 kg



Portrait installation of the screen



Security screws provide protection against accidental fall or unauthorised removal of a screen



TECHNICAL SPECIFICATIONS

Product dimensions	W: 458 mm D: 45 mm H: 780 mm (W:18,03" D:1,77" H:30,71")
Product weight	6,5 kg (14 lb)
Max. distance from mounting surface	45 mm (1,77")
Min. distance from mounting surface	45 mm (1,77")
Max. mounting pattern	400 mm x 750 mm
Min. mounting pattern	50 mm x 100 mm

LOGISTICS DATA

SAP INDEX	EAN CODE	COLOUR	PACKAGE DIMENSIONS	PACKAGE WEIGHT
WUSC-PWB3c-B	5908252960910	BLACK	790 x 350 x 70 mm 31,10 x 13,78 x 2,76"	7,2 kg 16 lb

HS Code (Harmonized System): 732690, HTS Code (Harmonized Tariff Schedule): 7326909890, Country of Origin: Poland

ACCESSORIES AND RELATED PRODUCTS



LWB3



TWB3



XWB3



PWB1