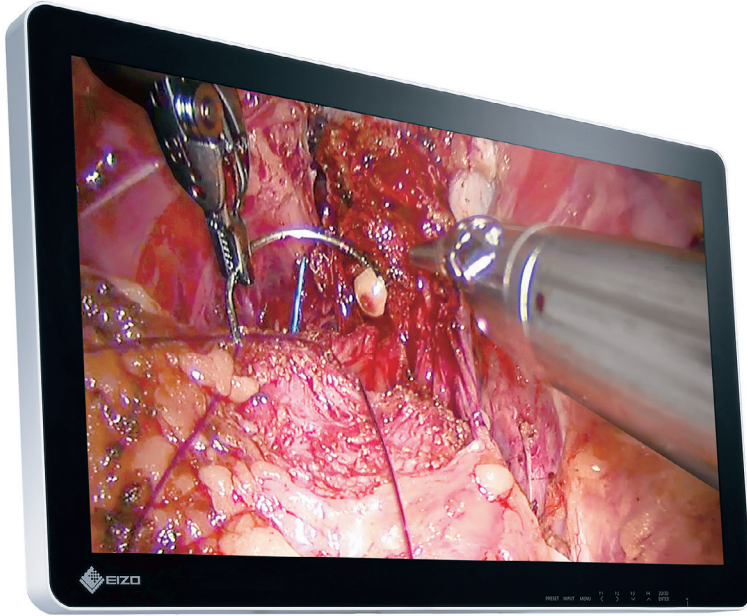




3D Surgical Monitor

CuratOR® EX2620-3D



Faithfully reproduce stereoscopic images with this 26-inch widescreen 3D surgical monitor.

### 3D Surgical Display with High Visibility

This monitor uses a 3D LCD panel with an LED backlight, a brightness of 580 cd/m<sup>2</sup> and a contrast ratio of 1400:1. It displays in full HD resolution, and faithfully reproduces 3D surgical images for endoscopy and operation microscope feeds; creating a feeling of depth where stereoscopic imagery is required.



### Fully Flat Design for Safety and Hygiene

Operating rooms contain various medical devices that are arranged by the type of surgery being undertaken. In consideration of safety, EIZO's surgical monitors adopt rounded corners. The front is covered with a fully flat protective glass that is dustproof and waterproof (Monitor front: IP45, overall: IP32).

Furthermore, it is fanless, making it easy to clean and disinfect. Cables can be neatly stored in the cable cover, improving safety and hygiene in the operating room.



# CuratOR® EX2620-3D

## Reduced Reflections

Reflections on the screen of LCD monitors are caused when external light hits the screen and reflects off of the protective glass and air layer at different refractive indices. Optical bonding removes the layer of air in between the LCD panel and protective glass in order to lower the refractive index. This softens the reflections on the screen and produces a clear, highly visible image without affecting contrast.

## High Durability

The protective glass used has a hardness of more than 9H, making it difficult to scratch. Furthermore, since optical bonding removes the air layer, foreign materials such as dust and moisture cannot damage the LCD panel.

## Condensation Prevention

Since condensation cannot form between the LCD panel and protective glass, the monitor can be used in environments with wide temperature ranges without affecting visibility.

## Bright and Flicker-Free 3D Image

The CuratOR EX2620-3D uses a polarized system for displaying 3D images with excellent color characteristics and without flicker.

## Lightweight, Anti-Fog 3D Glasses for Clear Vision

The supplied 3D polarizing glasses required to view images in 3D do not require batteries for operation and are lightweight. This makes them perfect for long surgeries where heavy, battery operated glasses may fail and become uncomfortable. Furthermore, the glasses have an anti-fog coating to prevent fog and maintain clear vision even when wearing a surgical mask.

## Various 3D Signal Format Support

The monitor support Side by Side, Line by Line, Top/Bottom, and SIMUL 3D signal formats.

## 3D Image Display Function

- 180 degree rotation
- Parallax adjustment

## 2D Image Display Function

- Picture by picture support
- Adjust screens independently from each other
- 180 degree rotation and mirroring

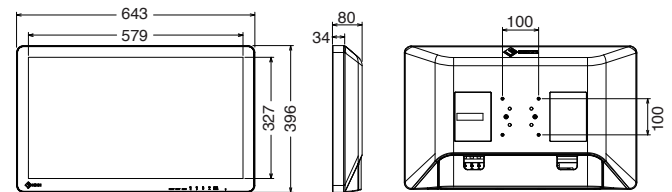
## Various Input/Output Signal Support

The monitor supports various video input/output signals for connecting to various types of modality equipment. Furthermore 3D/2D display switching, input signals and screen rotation can be controlled externally, to change the display in conjunction with the settings of the surgical equipment being used.

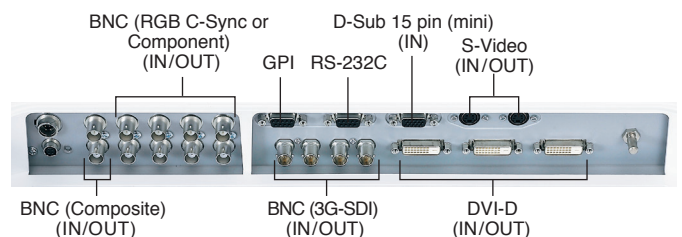
## Specifications

Panel	Type	Color (IPS)
	Backlight	LED
	Size	66.1 cm / 26.0"
	Native Resolution	1920 x 1080 (16:9 aspect ratio)
	Viewable Image Size (H x V)	576 x 324 mm
	Pixel Pitch	0.300 x 0.300 mm
	Display Colors	10-bit colors (SDI) : 1.07 billion (maximum) colors 8-bit colors: 16.77 million colors
	Viewing Angles (H / V, typical)	178° / 178°(2D mode)
	Brightness (typical)	580 cd/m <sup>2</sup>
	Contrast Ratio (typical)	1400:1
Video Signals	Response Time (typical)	18 ms (on / off)
	Input Terminals	BNC (3G-SDI) x 2, BNC (Composite) x 1, BNC (RGB C-Sync or Component) x 1 set, S-Video x 1, DVI-D x 2 (with HDCP), D-Sub 15 pin (mini) x 1
	Output Terminals	BNC (3G-SDI) x 2, BNC (Composite) x 1, BNC (RGB C-Sync or Component) x 1 set, S-Video x 1, DVI-D x 1
	Digital Scanning Frequency (H / V)	15 - 75 kHz / 24 - 60 Hz
	Analog Scanning Frequency (H / V)	15 - 80 kHz / 24 - 85 Hz
Power	Sync Formats	Separate, Composite, Sync on green
	Power Requirements	AC 100 - 240 V: 50 / 60 Hz
Features & Functions	Maximum Power Consumption	95 W
	Features & Functions	3D (Side by Side, Line by Line, Top and Bottom, SIMUL), Remote control (RS-232C, GPI)
Physical Specifications	Net Weight	8.5 kg
	Hole Spacing (VESA Standard)	100 x 100 mm, M4, depth 5 - 9 mm
Environmental Requirements	Degree of Protection	IP45 (Front), IP32 (Rear)
Certifications & Standards (Please contact the EIZO group company or distributor in your country for the latest information.)		CE (Medical Device Directive), EN60601-1, ANSI/AAMI ES60601-1, CSA C22.2 No. 601-1, IEC60601-1, VCCI-A, FCC-A, CAN ICES-3(A), RCM, RoHS, China RoHS, WEEE, CCC, EAC
FDA		Class I
Supplied Accessories (May vary by country. Please contact EIZO for details.)		AC power cord, AC adapter, 3D fogless polarized glasses x 3, Cable cover, Utility Disk (PDF installation manual), instructions for use
Warranty		Two Years

## Dimensions (Unit : mm)



## Connector



ul. Dworcowa 8  
43-200 Pszczyzna  
sklep@unikomp.pl  
www.wyswietlanie.pl

Telefony  
(32) 210 22 11  
(32) 326 33 00  
(32) 212 88 22

All product names are trademarks or registered trademarks of their respective companies. EIZO, the EIZO Logo, and CuratOR are registered trademarks of EIZO Corporation. Screen image provided by FASE. Specifications are subject to change without notice.